



broadloom



tile

NOVICE



DESIGN IS PLACE



DESIGN
JOURNEY
NOVICE & MASTER

shaw contract group





ARTISAN TILE



CLOTH TILE



PLAIN WEAVE TILE



ARTISAN LOOM

ARTISAN TILE • CLOTH TILE • PLAIN WEAVE TILE • ARTISAN LOOM
shown in plain weave tile



naga 99504



pagoda 99515



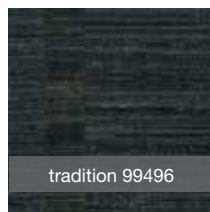
hand craft 99555



pidan 99314



bayon 99585



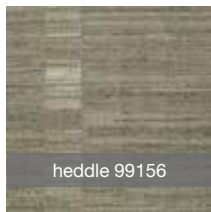
tradition 99496



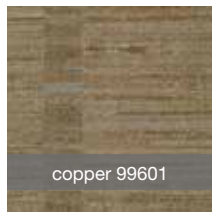
angkor 99500



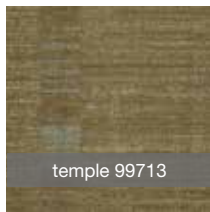
natural silk 99111



heddle 99156



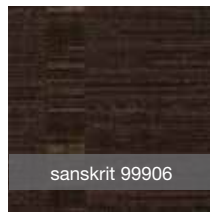
copper 99601



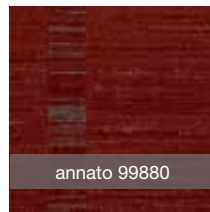
temple 99713



kadai 99760



sanskrit 99906



annato 99880

IMMERSED IN INTRICACY

Intrigued by the art of silk weaving, we journeyed to Cambodia and Laos. Seated beside master-weavers, we immersed ourselves in the process, awed by the complexities of hand-weaving thousands of filaments. Artisans here do not learn from a book. The patterns are in their memories, intricate techniques handed down from master to novice, generation to generation. Design is place.



NOVICE: RAW TALENT

One who is long-practiced at the craft weaves with intricate precision, while those early in the craft weave in a raw, uneven fashion. The natural quality adds character, celebrating the artisan novice.

product specifications		
	Tile	Broadloom
Face weight:	artisan: 38 oz. plain weave: 38 oz. cloth: 38 oz.	artisan loom: 38 oz.
Fiber:	Eco Solution Q®	Eco Solution Q®
Backing:	EcoWorx®	Ultraloc®



shaw contract group®

For more information on **Design Journey—Novice & Master** contact your local Shaw Contract Group representative, visit us at shawcontractgroup.com or call 877-502-SHAW.

© 2014 Shaw, a Berkshire Hathaway Company