

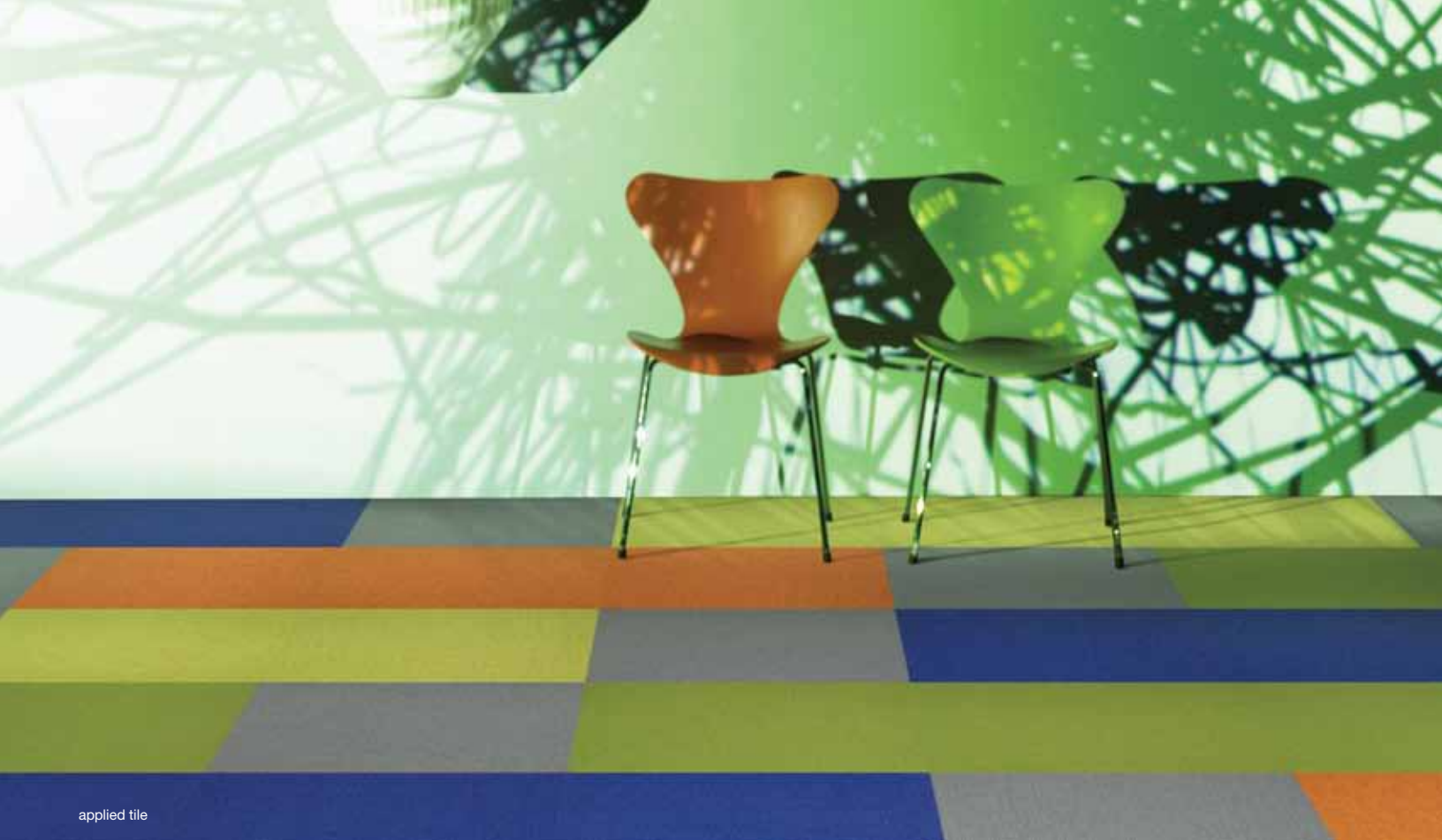


tile

LIGHT SERIES

design is enlightened

shaw contract group®




applied tile

PROJECTED ENERGY

SHARDS OF COLOR AND JABS OF LIGHT. LIGHT SERIES LIVES IN A STATE OF PERPETUAL MOTION. VIVID WAVELENGTHS IN VARIED SCALE AND COLOR INTENSITY. DESIGN IS ENLIGHTENED.



product specifications	
	Tile
Face weight:	applied: 22 oz
Fiber:	Eco Solution Q®
Backing:	EcoWorx®
	

For more information on **Light Series** and to view Vibrant tile, Visible tile and Absorbed tile contact your local Shaw Contract Group representative, visit us at www.shawcontractgroup.com or call 877-502-SHAW.

shaw contract group

© 2012 Shaw, a Berkshire Hathaway Company