



broadloom



integrate
design is clever

And now for some fresh thinking. This is Integrate, youthful, mixable patterns designed for demanding spaces. Constructed of Eco Solution Q® solution dyed nylon and EcoWorx® performance broadloom backing, it's unendingly durable and thoroughly cradle to cradle. How smart is that?

shaw contract group®



cadence



vestige



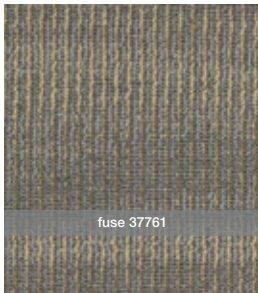
entity

colors

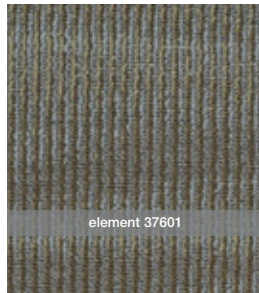
shown in style **cadence**



knot 37715



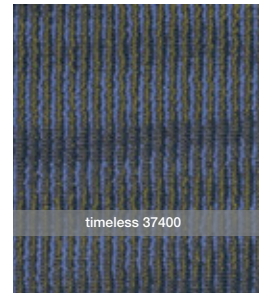
fuse 37761



element 37601



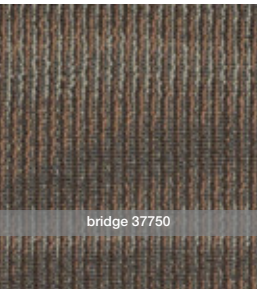
maze 37335



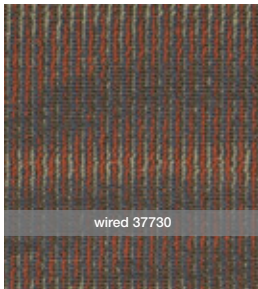
timeless 37400



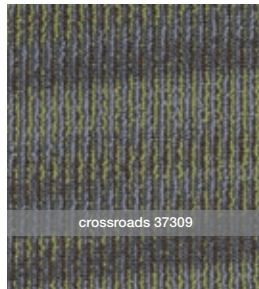
symbolic 37512



bridge 37750



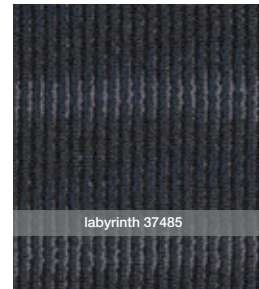
wired 37730



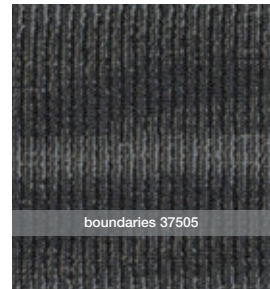
crossroads 37309



versatile 37500



labyrinth 37485



boundaries 37505

product specifications

Broadloom

Face weight:

cadence & vestige: 20 oz
entity: 22 oz on EcoWorx® Performance Broadloom
 28 oz on Teklok®

Fiber:

Eco Solution Q®

Backing:

cadence & vestige: EcoWorx® Performance Broadloom
entity: EcoWorx® Performance Broadloom & Teklok®



For more information on Integrate contact your local Shaw Contract Group representative, visit us at www.shawcontractgroup.com or call 877-502-SHAW.